

**Contact Information:**

**Rose Ann Vasquez**-LC3 Collaborative Coordinator

[rvasquez@fyinm.org](mailto:rvasquez@fyinm.org) 575-644-6260

**Jessika Romero**- LC3 Collaborative Community Organizer

[jromero@fyinm.org](mailto:jromero@fyinm.org) 575-800-4839

**May 2021 Newsletter**

**The LC3 Collaborative - Our Aspiration:**

**To build a behavioral health system that is inclusive, organized, centered on the individual and family, and is committed to advocating for and providing comprehensive mental health and substance use disorder services for people across Doña Ana County, New Mexico.**

**PLEASE TAKE THE SIMS SURVEY!!!**



We would like to invite you to take a survey regarding the capacity, activity, reach, engagement, and impact in your organization and in the LC3 Collaborative. This is a follow-up survey to the Strategic Impact Measurement Survey (SIMS) administered in Fall 2020, to assess any changes in your organization and LC3.

We are appreciative of your participation in this survey, as it is important for us to understand the capacity of member organizations and evaluate the progress of our goals. To take the survey, please click on this link: <https://www.surveymonkey.com/r/LC3May2021>

If you have any questions, please contact Wendy Chi ([chi@colorado.edu](mailto:chi@colorado.edu)), LC3 Evaluator.

**LC3's next step...  
let's put our planning into ACTION!**

**LC3 Action Teams have begun the process to identify new services/programs that we want to develop for our community. Please review the information and presentations below.**

**A brief description of the each ACTION TEAM is included below:**

- **Strategic Hub:** LC3 Collaborative will be the strategic hub for behavioral health in Dona Ana County.
- **Children and Families:** LC3 will

**Resources for the Action Teams**

Action Team Description and Introduction- [Click here to view](#)

Data Presentation- [Click here to](#)

collaborate with educational and service partners to provide children and their families with access to integrated behavioral health services.

- **Supportive Housing:** LC3 will facilitate integrated housing and community supports to advance better outcomes for behavioral health clients.
- **Access:** LC3 Collaborative will engage state, county, and local partners to advocate for enhanced access to virtual behavioral health services.
- **Client Advocates:** LC3 Collaborative will advocate for client advocates to support an integrated service support journey for behavioral health clients.

[view](#)

Evidence Based Services/Programs examples that meet the criteria- [Click here to view](#)

Prototype Activity Presentation- [Click here to view](#)

LC3 Plan on a Page Draft- [Click here to view](#) (please review and make suggestions to [Jessika jromero@fyinm.org](mailto:jromero@fyinm.org))

## LC3 Members Spotlight

### #GOGREEN4MH

Join Mesilla Valley Hopspital and the City of Las Cruces for the 2nd Annual

"Go Green for Mental Health" Day

Thursday, May 27th

*Drive-thru lunch at MVH*

**12pm - 1pm!**



The goal of #GoGreen4MH Day is to promote mental health awareness and to help break the stigma related to mental health & substance use conditions. We're encouraging the community to participate by:

- Wearing green ribbons and attire
- Tying green bows outside businesses, agencies, and homes
- Posting photos on social media with the hashtag #GoGreen4MH

Mesilla Valley Hospital is inviting the public to a special "Drive-thru Lunch" in honor of #GoGreen4MH Day. The first 300 people will receive a hot dog lunch from Santa Fe Grill and an MVH goodie bag. (Attendees are asked to remain in their cars and follow directions when arriving at 3751 Del Rey Blvd.)

**Join us in spreading the word to let people know it's OK to ask for help!**

### Resource Directory Guide-

**IS YOUR AGENCY IN IT?!?!?**

**Don't miss out!!**

Our LC3 Interns and and the Doña Ana County Resilience Leaders program have partnered together to create a resource guide that will be available for local agencies, providers, and communities which

NM Office of the Attorney General Internet Crimes Against Children and Human Trafficking Presentation and Brochures

**Parent Guide to apps**

include: (1) housing, (2) behavioral healthcare, (3) transportation, (4) food pantries, (5) healthcare, (6) early childhood programs, (7) youth mentorship programs, (8) job training and placement programs, (9) high-functioning schools, and (10) parent supports including home visiting programs.

Fill out Google Form with your information by clicking on the link if you or your agency provides direct BH services to DAC: <https://forms.gle/E6JfwaaUdqmFDz7N7>

**NM Human Trafficking Task Force Brochure**

**NM Internet Crimes Against Children Task Force Brochure**

**Human Trafficking Case Reporting Protocol**

## LC3 Training Opportunities

YR1 Objective: Train 100 individuals

### CLICK HERE to view the training spreadsheet

Now that we have identified our 5 areas of priorities in our behavioral health system in Doña Ana County during our Strategic Planning process, we can offer specific trainings in these areas.

Please note:

In order to track LC3 members who have completed SMI Adviser, SAMSHA training sessions, please include your DAC zip code and email address that received this message when registering.

In order to track LC3 members who have completed National & Hispanic MHTCC training sessions, please email [Jessika.jromero@fyinm.org](mailto:Jessika.jromero@fyinm.org) the certificate of completion.



### Collaboration Corner

#### Resilience Leaders

**(LC3 serves as the BH Sector):**

The Doña Ana County Resilience Leaders program works to strengthen our county's system of survival and thriving by providing 100% access to quality service. Our work includes relationship building with community partners and training of agencies and communities to prevent Adverse Childhood Experiences (ACEs), trauma, and maltreatment by engaging, assessing, planning, acting, and evaluating.

Meets the last Friday of the month from 9am-11am.

Contact: **Shannon Hernandez**  
[sherna8349@gmail.com](mailto:sherna8349@gmail.com)

#### Mayor's Suicide Prevention Taskforce:

The Suicide Prevention Task Force primary

### Upcoming Events

#### May 24:

LC3 Monday Mindset Power 12-1pm

#### May 26:

Ribbon Cutting Ceremony for the Crisis Triage Center! and Open House  
9am-4pm  
1850 Copper Loop, Building B  
Las Cruces, NM 88005

#### May 28:

Resilience Leaders Meeting  
9-11 am

#### May 31:

Holiday: Memorial Day

#### June 1:

LC3 General Meeting- Prototype Activity

focus is to raise awareness, educate, train and support our community by developing and sustaining partnerships, providing technical assistance, and contributing to policy and legislative initiatives related to suicide prevention.

Visit website to view resources, training opportunities and watch video of the 2020 Recovery Night.

<https://www.lcsuicideprevention.com/>

Meets the 3rd Wed. of each month.

**UP! Coalition:**

UP!'s vision is that every community member in Doña Ana County has the opportunity to live a life free of alcohol, tobacco, other drugs, and adverse health behaviors.

"Talk. They Hear You" Campaign recently launched!

Contact: Alyssa Myrick [amyrick@chi-phi.org](mailto:amyrick@chi-phi.org)

11:30am-1:30pm

**June 2:**

LC3 Lunch Bunch, Community Wellness Wednesdays

Presenter: Carol and Tim Kane

Topic: Oxford House

12-1pm

**June 10 :**

Community Presentation, Special Agent, Anthony Maez, NM Office of the Attorney General

Topic: Vicarious Trauma and Wellness

12-1:30pm

**June 15:**

LC3 General Meeting- Prototype Activity

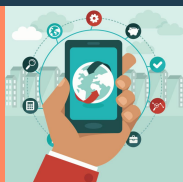
**June 16 :**

Mayor's Suicide Prevention Task Force meeting 12-1:30pm

**June 17 :**

UP Coalition Meeting 9-11am

**Resources for YOU! (Click on yellow links for more information)**



**State NM Connect App**

**NM 5 Actions Program**  
Self-Guided Roadmap to Understanding and Addressing Addiction in Your Life

**Crisis and Access Line**

Call for support and resources

1-855-NMCRISIS (662-7474)

Toll Free 24/7/365

711 for relay (hearing & speech impaired)

Language services available 24/7

**Warmline**

Call or text to connect with a peer

1-855-4NM-7100 (466-7100)

Call 3:30pm – 11:30pm

Text 6pm – 11pm

711 for relay (hearing & speech impaired)

**City of Las Cruces Suicide Prevention Task Force Resources**

Resources in the Las Cruces area

**Healthcare Worker and First Responder Support Line**

1-855-507-5509

Visit LC3 on Facebook.



Share with others!



LC3's webpage!



Visit FYI's website.

