



Meeting Notes

November 14, 2023

8:30 a.m. - 10:00 a.m.

Paso del Norte Health Foundation

221 N. Kansas, 19th Floor El Paso, Texas 79901 Meeting Room C

Attendees:

Erin Argue
Sharon Butterworth
David Chayer
Gus Cohen
Valeria Contreras
Linda Corchado
Sandra Day
Adrian Duran
Catherine Garcia
Cathy Gaytan
Kori Gough
Cindy Hernandez
Katie Kanellis
Josue Lachica
Ron Long
Laura Marquez
Dr. Sarah Martin
Claudia Munoz
Juan Núñez
Doris Ognibene
Daniel Quinones
Richard Salcido
Nicole Schiff
Ivonne Tapia
Isidro Torres
Kathie Valencia
Krista Wingate

Representing:

Texas Alliance of Child & Family Services
Paso del Norte Center at Meadows Institute
Family Services of El Paso
YWCA
Heart Gallery of El Paso
Children at Risk
Paso del Norte Health Foundation
El Paso Center for Children
County of El Paso Juvenile Probation Department (JPD)
El Paso Child Guidance Center
Heart Galleries of Texas
Emergence Health Network
Emergence Health Network
Paso del Norte Center at Meadows Institute
Strong Families Family Advisory Council
Paso del Norte Children's Development Center
Texas Tech Health Sciences Center El Paso
Texas Department of Family and Protective Services (TXDFPS)
Paso del Norte Health Information Exchange (PHIX)
Emergence Health Network
City of El Paso - DCHD
Family Services of El Paso
Paso del Norte Center of Hope
Aliviane Inc./Chair Family Leadership Council
NAMI El Paso
El Paso Center for Children
Emergence Health Network

Welcome and Introductions

Ivonne Tapia convened the meeting at 8:36 a.m. and called for introductions.

Youth Sequential Intercept Model Event – Ivonne Tapia calls on Josue Lachica to share some brief reflections on the SIM event that occurred October 25th and 26th. Josue provided a summary of the 1.5-day event. He explained that the development of workgroups related to the SIM will intersect with the continuous work within the FLC and its workgroups and taskforces. [See attached presentation slides.](#)

Work Group Progress – Ivonne Tapia and Cathy Gaytan discussed opportunities to integrate the SIM work groups with the current FLC work groups. It was agreed that the FLC will continue to explore how to capitalize on the intersection of the SIM and FLC. Discussion will continue in the January 2024 FLC meeting.

Help Me Grow Initiative – Laura Marquez provided a summary of initiative progress including development of their data system, and integration of Care Coordinators into childcare centers with a focus on screening. The Help Me Grow initiative will be sharing referral forms with the FLC partners in the near future.

Strong Families – Kathie Valencia shared a summary of the progress made on the FLC video. Ghostlight Creative has requested to be added to the agenda for the January 2024 FLC meeting to introduce the final video to the partners.

Other Business – Kori Gough introduced Valeria Contreras as the new Executive Director of the Heart Gallery of El Paso and Erin Argue, the Heart Galleries of Texas Associate Director.

Ron Long informed the FLC partners that the Family Advisory Council continues to meet monthly and is available to provide perspective from family members in the community.

Adjourn – Ivonne Tapia Adjourned the meeting at 10:03 am

El Paso Youth Sequential Intercept Model(SIM) 2023

Family Leadership Council

Josue Lachica, jlachica@mmhpi.org

MEADOWS
MENTAL HEALTH
POLICY INSTITUTE

PRIORITIES

In Partnership with:

| 2



MEADOWS
MENTAL HEALTH
POLICY INSTITUTE

SIM Event

| 3

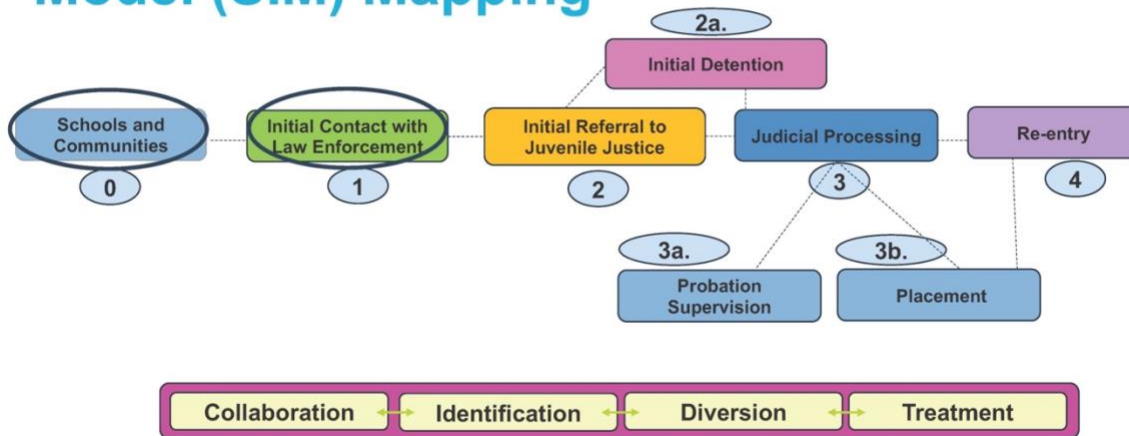
- October 25th & 26th
- 75+ stakeholders in attendance
- Representation from 30+ agencies

MEADOWS
MENTAL HEALTH
POLICY INSTITUTE

OVERVIEW

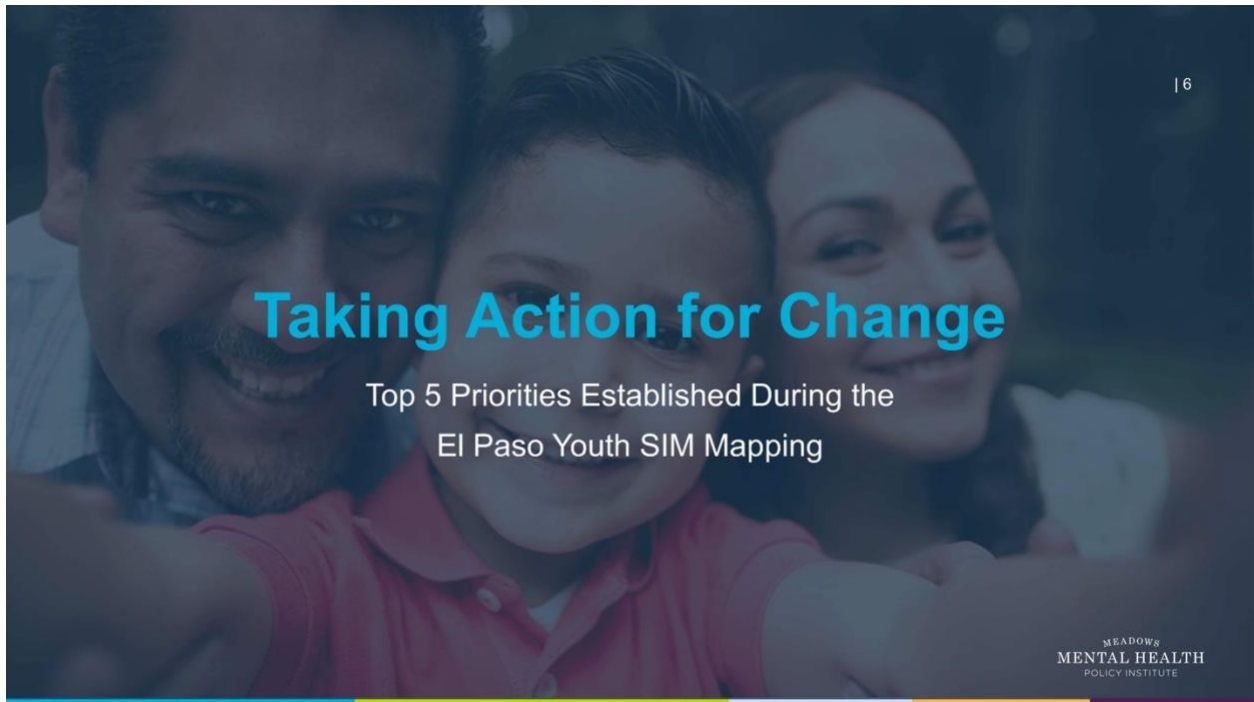
Youth Sequential Intercept Model (SIM) Mapping

| 4



MEADOWS
MENTAL HEALTH
POLICY INSTITUTE

Intercept 0 School and Community- Based Services	Intercept 1 Law Enforcement, SROs & Children's Emergency Services	Intercept 2 (Pre-adjudication) Initial Referral to Juvenile Justice, Intake, and Detention	Intercept 3 Judicial Processing (Secure Placement, Probation Supervision)	Intercept 4 Re-entry
<p>Community-Based Behavioral Health Services</p> <p>Crisis services, community services, case management, etc.</p> <p>School-based Services</p> <p>Mentoring programs, mental health programs, truancy programs, etc.</p> <p>DFPS/Family Support Services</p> <p>Transition-aged youth programs, foster care programs, etc.</p>	<p>Emergency Communications</p> <p>MH Co-responders programs</p> <p>Children's Hospitals</p> <p>Substance Use Disorder treatment centers</p> <p>Mental Health treatment/Respite centers</p> <p>Youth Shelters</p> <p>Law Enforcement Youth Units</p> <p>School Resource Officers Programs</p> <p>Disciplinary Alternative Education Programs</p>	<p>Pre-Adjudication Intake</p> <p>Diagnostic and assessment unit/program</p> <p>Pre-adjudication diversion programs</p> <p>Pre-Adjudication Detention</p> <p>Detention-based behavioral health provider/program</p> <p>Detention-based liaisons or case managers</p>	<p>Pre-Trial Intervention Programs</p> <p>Juvenile Treatment and Specialty Courts</p> <p>Juvenile Court liaison</p> <p>Court-ordered Juvenile Probation</p> <p>Post-adjudication placement (Secure and Non-Secure)</p> <p>Fitness Restoration Program</p>	<p>Community Supervision</p> <p>Juvenile Probation Specialized Case Loads</p> <p>Juvenile Parole Specialized Case Loads</p> <p>In-Reach Services SNDP/ TCOOMMI</p> <p>Transitional Housing</p>



Taking Action for Change

Top 5 Priorities Established During the
El Paso Youth SIM Mapping

Priorities Established for 5 Workgroups

1. First Offender Pre-Arrest Diversion Program
2. Discipline Alternatives and DAEP Reform
3. School-Based Crisis Intervention Team (CIT) and Mental Health Training
4. Data Systems, Data Sharing and Cross System Collaboration
5. Community-Based Behavioral Health/SUD Service Capacity and School Integration

Thank You!

For more information visit mmhpi.org.

Josue Lachica, jlachica@mmhpi.org

 THE HACKETT CENTER
FOR MENTAL HEALTH

MEADOWS
MENTAL HEALTH
POLICY INSTITUTE

PASO *del* NORTE CENTER
Meadows Mental Health Policy Institute

TRAUMA AND GRIEF CENTER AT
THE HACKETT CENTER

CENTER FOR CHILD
AND FAMILY WELLNESS

CENTER FOR JUSTICE
AND HEALTH

CENTER FOR HEALTH
SYSTEM TRANSFORMATION