

APRIL NEWSLETTER



LC3'S VISION

To build a behavioral health system that is inclusive, organized, centered on the individual and family, and is committed to advocating for and providing comprehensive mental health and substance use disorder services for people across Doña Ana County, New Mexico.

THE MAIN HIGHLIGHTS:



Upcoming & General Information



Community Needs Assessment Deadline (4.30)



Upcoming Events, Save the Dates & More! (Upcoming LC3 Strategic Reboot, Kinder Coalition, Las Cruces Suicide Prevention Task Force)



Upcoming Trainings, Free CEUs, and more highlights! Meet Amanda!



APRIL LC3 GENERAL MEETING

In case you missed it, you can click below to view March's meeting presentation!

WANT TO SPEAK AT THE NEXT LC3 GENERAL MEETING?

REACH OUT TO JAVIER GUERRERO, ICS COMMUNITY COORDINATOR AT JGUERRERO@FYINM.ORG



WHERE?

MOLCAJETE'S

251 W HALL ST. HATCH, NM
87937

TIME: 3:30-4:30 (IN-PERSON)



WHEN?

THURSDAY APRIL 25TH

AFTER THE MONTHLY HATCH
COALITION MEETING



Next LC3 Meeting:

WHEN:

Tuesday, May 21st, 2024

WHERE:

1320 S Solano Dr, Las Cruces
NM 88001 (HYBRID)

RSVP Here!

Or go to www.tinyurl.com/LC3MayGM



CONTACT INFO:

JAVIER GUERRERO

HE, HIM, HIS

ICS COMMUNITY COORDINATOR, FYI+



EMAIL: JGUERRERO@FYINM.ORG



OFFICE: 575-202-6987

2024 LC3 COMMUNITY NEEDS ASSESSMENT - DOÑA ANA COUNTY

WHY ARE COMMUNITY NEEDS ASSESSMENTS NEEDED?

- **LC3 Conducts Community needs assessment, gap analysis and subsequent 3-year strategic plan to close system gaps amidst another pandemic disruption. LC3 proved to be an effective vehicle for coordination and resilience as a central hub of information and action during the pandemic. The long-term vision for LC3 is to develop an ecosystem of coordinated communication and collaboration amongst providers to improve health outcomes by building capacity for system interventions.**
- **To build the Ideal Behavioral Health System in our region and increase access to behavioral health, particularly for the most vulnerable populations identified in our Community Needs Assessment.**



HOW DO WE TAKE THE SURVEY?

Scan QR Code on the lower right side of this page to take this year's community needs assessment, or go to www.tinyurl.com/LC3CNS2024



SURVEY CLOSING ON
4.30.24 AT 11:59 PM MST

COMING SOON...

KINDER COALITION
YOUTH LEADERSHIP SUMMIT
MAY 11TH (8:30 AM - 3:30 PM)
DETAILS TO THE RIGHT OF THE PAGE



COMING SOON

LC3 STRATEGIC REBOOT
SAVE THE DATE(S)

- **MAY 23RD (10 AM - 2 PM)**
- **MAY 28TH (10 AM - 2 PM)**



COMING SOON

LC3 + LCSPTF: MY ASCENSION
MOVIE SCREENING

- **JUNE 8TH**
- **RIO GRANDE THEATRE**
- **RSVP OPENING SOON**



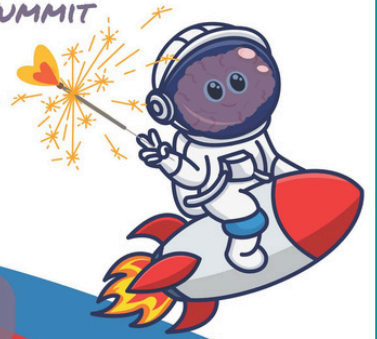
COMING SOON

IGNITE YOUR POTENTIAL

YOUTH LEADERSHIP SUMMIT
MAY 11, 2024

Free and open to all youth grade 6 to early college.

IGNITE YOUR FUTURE!



Join us for an electrifying event where the sparks of leadership, social justice, and inclusion will ignite!

Set to inspire and empower the next generation of changemakers through captivating speakers, interactive workshops, and hands-on activities.

Get ready to embark on a transformative journey, discovering your potential to make a meaningful impact on the world.

REGISTER TODAY!



<https://tinyurl.com/8uy38erh>

BREAKFAST & LUNCH PROVIDED
May 11th

8:30 am to 3:30 pm
Las Cruces DACC East Mesa
Student Resources Building
2800 Sonoma Ranch Blvd,
Las Cruces, NM 88011



LC3 APRIL GENERAL MEETING



KAYLEIGH MARTINEZ
PEAK BEHAVIORAL HEALTH - HATCH COALITION CHAIR
SHE/HER/HERS



Hello, I'm Kayleigh, a small-town girl from Hatch, New Mexico, just a stone's throw away from Las Cruces. I graduated in 2020 with a degree in public health, following a long stint in the service industry. My passion for serving others led me to intern at FYI+ in 2017, where I worked with Bell and the prevention team to educate and provide preventatives to underserved populations. Building on this experience, I continued my journey in housing at Mesilla Valley Community of Hope during my bachelor's program, setting the stage for my current role at Peak Behavioral Health in 2022. Thanks to the encouragement of Kristin, when hiring me she basically said I could do anything I want in Southern NM. A short 2 years later that has included representing Mesilla Valley Housing Board of Commissioners, Dona Ana Resilience Leaders Housing Sector, Las Cruces Suicide Prevention Taskforce Survivors of Suicide Support Group, and the Village of Hatch Coalition. I'm excited to continue making a difference and pursuing my passions in the field of public health and housing.



UPCOMING TRAININGS

MAY



5.2.24 (NLBHA) Trauma-Informed Care (pt2.) (9a-11a) 2HRS/CEUs
Virtual VIA Zoom

RSVP BELOW:
[Tinyurl.com/LC3Trainings](https://tinyurl.com/LC3Trainings)



5.16.24 (NLBHA) Trauma-Informed Care (pt3.) (9a-11a)
Virtual VIA Zoom

RSVP BELOW:
[Tinyurl.com/LC3Trainings](https://tinyurl.com/LC3Trainings)



MONTH TOTAL:

JUNE/JULY RSVPS
OPENING SOON!

3.5
CEUS

MEET AMANDA: ICS COMMUNITY COORDINATOR SHE/HER/HERS



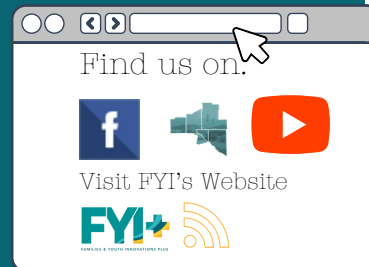
Meet Amanda Vega, a devoted professional residing in Dona Ana County. Married with two (2) teenage sons, she holds licenses as an LADAC in New Mexico and LCDC in Texas, specializing in addiction counseling.

She is in the process of acquiring her Master's in Social Work at Western NM University with her LMHC License (Licensed Mental Health Counselor). Her diverse career includes roles such as Mental Health Tech at DACDC, Forensic Case Manager at FIC-DAC, and Clinician/Team Lead at DAC-CTC.

With a passion for aiding others, she continues to make a positive impact on mental health in Dona Ana County and beyond.

Email: avega@fyinm.org

**WELCOME ✨
to the TEAM**



OUR PARTNERS

