



## **Specialty Care Work Group Meeting Notes**

**June 24, 2025**

**9:00 a.m. - 10:30 a.m.**

**Paso del Norte Health Foundation**

**221 N. Kansas, 19<sup>th</sup> Floor**

**El Paso, Texas 79901**

**Meeting Room C**

### **Attendees:**

Rafael Aguilera  
Merissa Amerete-Soliz  
Tanya Berry  
Natalie Borrego  
Sharon Butterworth  
Gilda Gil  
Cynthia Henry  
Iyali Lara  
Enrique Mata  
Sandra Oviedo-Ramirez  
Nicole Schiff  
Terese Shiring

### **Representing:**

UTEP – REAS Center  
El Paso County Juvenile Probation Department  
Texas DFPS Child Protective Services  
Intern – PdN Center at Meadows Institute  
PdN Center at Meadows Institute  
Paso del Norte Children's Development Center  
Paso del Norte Center of Hope  
El Paso Children's Grief Center  
Paso del Norte Center at Meadows Institute  
UTEP – REAS Center  
Paso del Norte Center of Hope  
Paso del Norte Center of Hope

### **E-Mail:**

[raguilera3@utep.edu](mailto:raguilera3@utep.edu)  
[mamerete@epcountytexas.gov](mailto:mamerete@epcountytexas.gov)  
[tanya.berry@dfps.texas.gov](mailto:tanya.berry@dfps.texas.gov)  
[nborrego@mmhpi.org](mailto:nborrego@mmhpi.org)  
[Sharonbutterworth@mac.com](mailto:Sharonbutterworth@mac.com)  
[gilda.gil@pdnchildrens.org](mailto:gilda.gil@pdnchildrens.org)  
[cynthia@pdncoh.org](mailto:cynthia@pdncoh.org)  
[iyali@cgcel Paso.org](mailto:iyali@cgcel Paso.org)  
[emata@mmhpi.org](mailto:emata@mmhpi.org)  
[sloviedoramirez@utep.edu](mailto:sloviedoramirez@utep.edu)  
[nicole@pdncoh.org](mailto:nicole@pdncoh.org)  
[shiri018@umn.edu](mailto:shiri018@umn.edu)

## **Welcome and Introductions**

Nicole Schiff welcomed the group and called for introductions.

## **May 2025 Site Visit to Integral Care programs in Austin, Texas**

Enrique Mata provided his reflections on site visits he and Josue Lachica performed on May 14<sup>th</sup> in Austin Texas. Key staff of the Meadows Institute were formerly executive staff for the Integral Care LMHA in Austin. They helped Josue and Enrique with access and executive leadership to tour and share operations information for their Child and Youth Respite Center, The Terrace Supported Housing, and their role with the Tiny Homes Campus Phase I. He provided slides with specific takeaways and photos of the three campuses they toured. Those slides are included with these notes.

## **New happenings in the region**

Nicole Schiff provided some de identified scenarios for the group to discuss related gaps in El Paso County. One situation was particularly telling of the gaps El Paso has in serving youth under 17 years of age. A teenager situation with parent who cannot deal with teen, no place for the child to go. Each of our community organizations is challenged with conditions that do not allow the child to be placed in any local center.

### **Highlights from the discussion include:**

- What options do we have to mirror adult funding for supported housing and what policies do we need to change to ensure a safe and supportive respite?
- Center of Hope now has a private donor but funding for staffing is a challenge.
- JPD staffed 14 youth in the past 2 weeks. They started a spreadsheet to keep up with the denials. Most are capacity based conditions (e.g., not enough trained staff).
- The Challenge program only has 8 beds available, and the program is open to any county in Texas.
- JPD gets a budget for respite services, but that is maxed out every year, they too have a hard time to find placements for youth who are leaving the justice system.
- JPD has worked with facilities out of state, but when they put out the bid, only facilities that respond will be considered for matching the placement.
- YWCA TLC is full and has apartments but works with adults only.
- Need supported services over and above basic needs for children and youth.
- Health related support is also not available to JPD kids in detention unless a medical situation requiring treatment occurs in which case Texas Tech Physician Associates assists.
- Generally, in cases where mental health services are needed the care access options are challenging and uncoordinated.
- CPS Children without placement currently are using a loaned a space at a church. The staff try to provide wraparound services. Access problems occur primarily due to lack of professional staff availability.
- We need to seek out models for youth that have been shown to work. With cases where only models that serve adults are available, we need to identify ways to properly modify programming for age appropriate support for youth. Human trafficking shelters may have some solutions. Nicole is exploring the options.
- Operating any center to serve youth in need of these services requires the first year startup costs with an ironclad operating revenue sources such as a state line item in the budget.
- Gilda Gil addressed the group with a challenge for the CRCG and its support process. Region 19 used to have nonexclusional funding. In the past these funds could be used for respite care. Students who were placed in many cases had severe disabilities or emotional needs. The families were responsible for finding their own providers. Last year there was a change to having only one service center for the entire state and only the school districts would be allowed to manage these funds. This started in September 2024, and the CRCG has not been able to identify a school district willing to work with the funding. The have asked Region 19 and the TEA about how this is working in other communities but no response as of yet. Another concern is that students with intellectual disabilities are graduating from school and have nowhere to go. There are

really no foster homes willing to take these youth other than their current challenging home environment. CRCG Meets the third Thursday of every month at PdN Children's.

- The group is still seeking more accurate numbers of children and youth who fall into these gaps. Gilda will seek out numbers of youth that could be served and share with the group.
- Iliyana with Children's grief center commented that some cases are coming up where it is challenging to stay connected with the families. These youth are not following up after initial screening possibly because of the basic needs challenges, such as being unhoused.
- Enrique asked if anyone is utilizing McKinney Vento funding. He will follow up with the school district case workers.
- In the summer Paso del Norte Center of Hope helped recover 52 youth who had run away or were missing.
- In May they were seeking 45 kids. Many of them were choosing to be homeless instead of going home.
- Enrique will also follow up with Carrie Bell to see if they are willing to open a program for youth.

## **Next Meeting**

- FLC General Meeting /July 8th
- Next Meeting Target/July 29<sup>th</sup>

## **Adjourn**

Nicole Schiff adjourned the meeting at 10:29 am. Presentation slides are included with these notes.





**Specialty Care Work Group  
June 24<sup>th</sup> Meeting**

# Specialty Care June 24<sup>th</sup> Agenda:



**Welcome and Introductions**



**Presentation on May 2025 Visit to Integral Care Sites**



**Respite Care and Residential Treatment**



**Adjourn**



# Presentation on May 2025

## Visit to Integral Care Sites

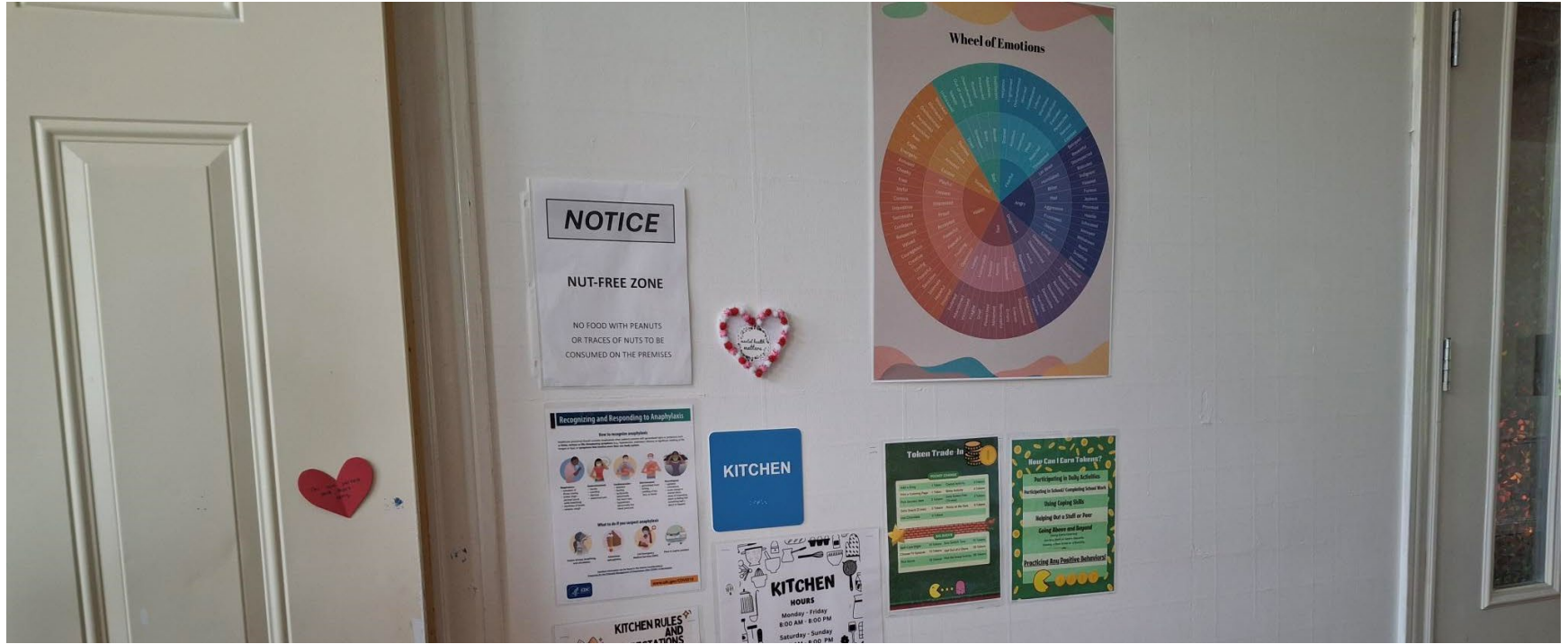


# CHILD AND YOUTH CRISIS RESPITE CENTER





# Respite Center Bulletin Board



# Respite Care Center Main Hall



# Respite Center Rooms





# Respite Center Kitchen



# Key Take Aways – Child and Youth Crisis Respite

- Integral Care started the Child and Youth Crisis Respite at an existing campus operated by the United Way and YWCA
- Opened August 23, 2024, the program offers a safe, supportive environment for young people ages 13-17 in Travis County who are facing a crisis or need a break from life's challenges.
- This short-term, 24/7 supervised program provides a chance for youth to decompress in a less restrictive setting than psychiatric hospitalization.
- Stays can range from a few days with an average stay of 5 days, based on individual and family needs. The Integral Care Youth Crisis Respite Program will be the only one of its kind in Travis County.
- Extremely challenging to maintain staffing for 24-hour care

# THE TERRACE AT OAK SPRINGS

Terrace at Oak Springs is located at 3000 Oak Springs Drive, Austin. The apartment is a four-story, 40,000 square-foot community with 50 fully-furnished single occupancy efficiency units offering permanent supportive housing to individuals experiencing homelessness in Travis County.

A home means recovery from homelessness, mental illness and substance use disorder. When people have a safe place to live, appropriate support services and the tools they need to achieve well-being, recovery begins and they can reach their full potential and contribute to their community.





# The Terrace at Oak Springs - Services

- Counseling and case management
- Behavioral Health Care
- Primary Health Care
- Drug and alcohol treatment
- Exercise and nutrition programs
- Employment Services
- Assistance accessing benefits
- Medication management and support
- Learn more about available services at our clinics



# Key Take Aways – The Terrace at Oak Springs

- Integral Care partners with an FQHC to provide services on the campus
- Individuals have access to support for medical, mental health and addiction conditions.
- Registered sex offenders and individuals with a history of arson or methamphetamine trafficking will not be eligible for housing at Terrace at Oak Springs.
- Residents must meet HUD chronically unhoused criteria. They sign a one year lease with an annual option to renew. Residents are eligible to renew their lease annually as long as they follow the terms of their lease and do not exceed the income requirement. Most people live in an apartment community like Terrace at Oak Springs for an average of two to three years.
- Dedicated staff are champions for assisting the target population

# TINY HOMES COMMUNITY – ENTREPRENEURIAL CENTERS





# Tiny Homes Community – Phase I over 480 Homes



# Tiny Homes Community – Clinic Collaboration





# Tiny Homes Community Phase II – 900+ Homes





## Tiny Homes Community – Communal Restrooms and Cooking Centers



# Wide Range of Styles including 3d Printed



# Key Take Aways – Tiny Homes

- The main funders for this venture are private foundations and corporate donors.
- Only minimal support comes from Integral Care. Staffing budgets are challenging to manage.
- Loaves and Fishes Mobile has a large stake in this venture.
- Individuals can stay as long as they want paying a rent of approximately \$300 per month.
- There is still crime and drug use on the campus.



# Key Take Aways - Overall

- Integral Care has a wide range of new and long standing collaborative relationships
- Each site is unique and not without its challenges
- El Paso has capacity to explore similar collaborations and take advantage of the learning experiences from these sites.
- It may be of benefit to have a cohort visit the Houston Model Site.



# REFLECTIONS FROM THE LAST MEETING

## Opportunity For Change:

**Reframe the concept of mental health and substance use specialty care as secondary to Integrated Primary Care (e.g., 25% of care).**



# Opportunity For Change:

**Strategy I** -As with primary care, clearly **identify mental health and substance use care and support that is beyond the scope of practice and cannot be directly provided within the primary care setting.** For example, serious mental health conditions that require an intensive coordinated approach with psychiatry, psychology, counseling, or substance use specialty care.

**Strategy II** - **Expand and enhance availability of well-established evidence-based interventions** for youth with more severe behavioral problems related to willful misconduct and delinquency (e.g., increase availability of child psychiatrists and child psychologists, increase availability and effective use of collaborative care model options (psychiatry, counseling, and primary care services).

**Strategy III** - Utilize the **Multisystemic Therapy Rider to promote timely wraparound support** for children with complex needs to prevent entry into the Foster Care or Justice **Strategy IV** - Improve residential support options to prevent children from inappropriately leaving for residential treatment out of town, including increasing compensation for foster parents and reimbursement options for nontraditional programs and expanding intensive Medicaid services to support foster families.

# Specialty Care Work Group – Nicole Schiff Chair Vice Chair

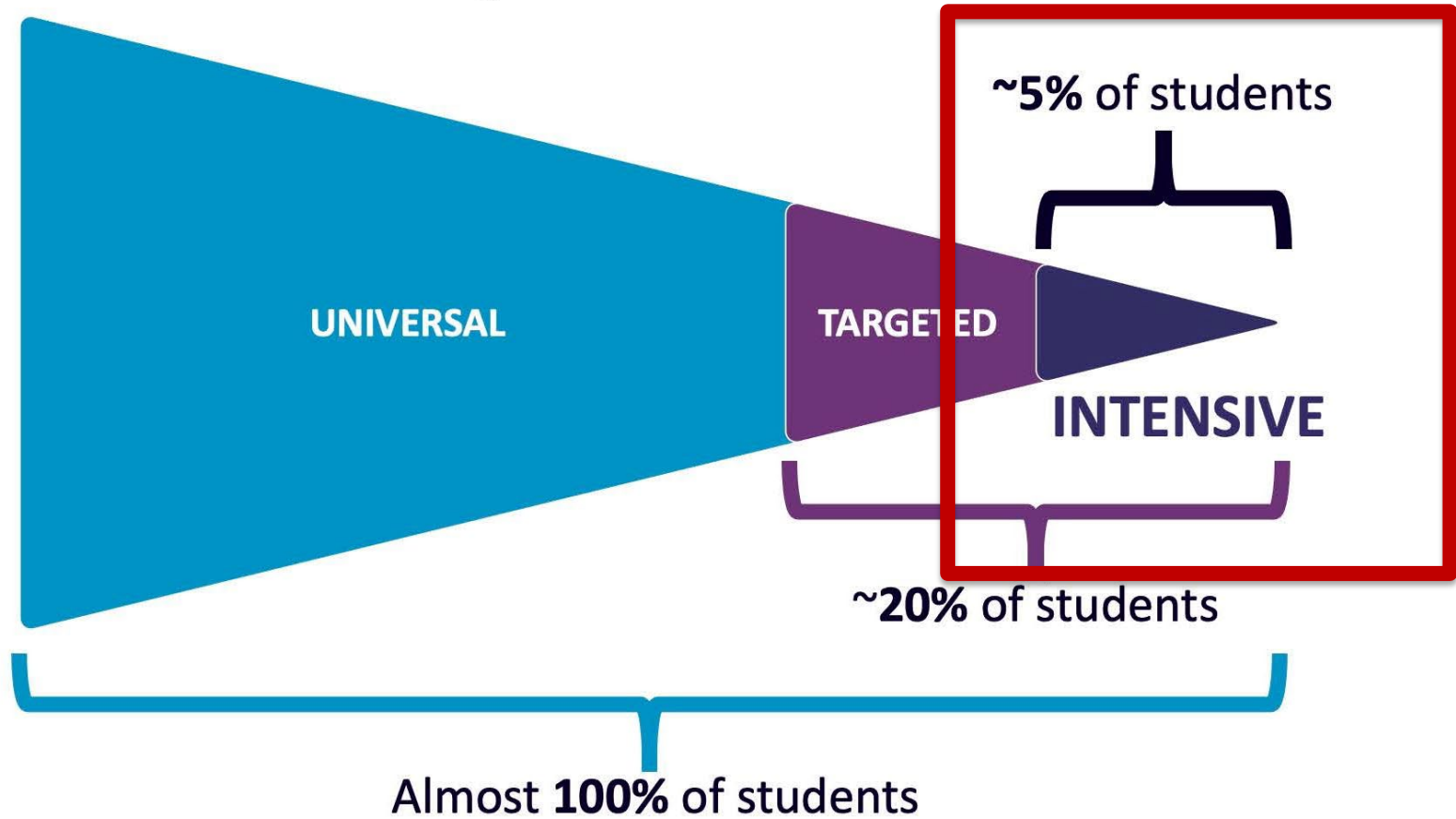
## Exists to:

Ensure appropriate, acceptable service options are available for complex mental health conditions and co-occurring substance use and mental health conditions

## What will it do:

Improve coordination and increase availability of specialty care services (e.g. wraparound care, PHP, IOP, addiction interventions, trauma and grief services).

Figure 2: The MTSS Tiers



# El Paso Youth Sequential Intercept Model (SIM) Report

Mapping School to Justice Pathways

## Relevant Key Findings

- **After Hours Access:** Lack of availability of services after hours or on weekends to accommodate the needs of parents, as well as transportation issues that can hinder access to essential services.
- **Substance Use Services:** Students are using substances, including vapes, to self-medicate. Systems are not in place in schools or in the community to consistently identify the root cause of behavior and connect students to substance use or mental health treatment to more effectively address the underlying cause of the behavior. When those needs are identified, there is a lack of intervention services related to substance use disorders (SUD). Failing to address the root causes of substance use and mental health issues can have long-term consequences, potentially leading to chronic SUD, ongoing mental health challenges, and a higher risk of involvement with the juvenile justice system.

## Relevant Key Findings

- **Child Psychiatry:** In 2020, El Paso County had 67 licensed psychiatrists. Of these, only 18 reported a specialization in child and adolescent psychiatry, pediatric psychiatry, or developmental-behavioral pediatrics.
- **Intensive Services:** In El Paso County, there is a shortage of providers who offer intensive community-based services. A lack of sufficient intensive community-based services that allow children and youth to thrive at home and in their communities could lead to an overreliance on more restrictive placements, such as psychiatric hospitals and juvenile detention.
- **Youth Voice:** Explore the establishment of a **state-funded Youth Crisis Respite (YCR) Center** and explore opportunities to further partner with law enforcement and El Paso County Juvenile Probation to serve youth that may be appropriate for diversion to the YCR.



# Cross Cutting Key Findings – Intercept 0

- **Information Sharing:** Lack of access to information about a child's history among behavioral health, school, and justice stakeholders can impede decision-making processes and access to appropriate care (i.e., PHIX)
- **Family Engagement:** Lack of family involvement and engagement in educational and support systems is exacerbated by family stress, lack of parental education, the need to teach parents how to navigate systems, bilingual needs, family mental health needs, and the scarcity of family partners with lived experience. Additionally, there is often stigmatization of mental health among caregivers.
- **Disciplinary Alternative Education Program and Vaping:** There is limited disciplinary alternative education program (DAEP) capacity to support youth expelled due to the new vaping laws passed (HB114). Texas law grants school districts discretion in applying "mandatory" disciplinary consequences, allowing consideration of mitigating factors, including disciplinary history. However, use of mitigating factors varies across districts and campuses, and many fail to fully explore alternatives to expulsion and exclusionary discipline practices.

## Gaps, Challenges, and Opportunities for Change

Of the 700-800 students arrested in school and referred to the juvenile justice system's first offender program in Fiscal Year 2023, 95% were assessed as low risk offenders and only 3% reoffended. (See Appendix 3, Data Presentation.) Significant school and justice human resource hours are expended to process low risk offenders who will receive a criminal record. **Sending low-risk youth into the juvenile justice system consumes significant resources from both schools and the justice system. These resources could be better allocated to addressing more serious offenses and providing support to high-risk youth.**



# Respite Care and Residential Treatment

## 2021 System Assessment

El Paso needs an array of crisis placements:

- In-home respite
- Crisis foster care
- Crisis respite
- Crisis stabilization



## 2021 System Assessment

Explore creating crisis respite to address the lack of a short-term crisis response, particularly for children and youth, using Medicaid managed care financing provisions as the funding mechanism

## Crisis care:

- ideally includes mobile teams that respond to urgent needs outside the routine delivery of care
- offers a continuum of time-limited out-of-home placement options ranging from crisis respite to acute inpatient to residential care.

## 2021 System Assessment - Crisis Respite



**Finding:** There are no available out-of-home, short-term crisis stabilization environments that could serve as an alternative to hospitalization for children and youth in crisis.

Crisis respite, whether facility-based or home-based, provides:

- temporary relief for caregivers
- a safe environment to resolve crises
- an opportunity to engage children, youth, and their families in services.

**crisis respite can serve as a safe alternative to inpatient care.**

## 2021 System Assessment - Crisis Respite



Crisis respite, whether facility-based or home-based, provides temporary relief for caregivers; a safe environment to resolve crises; and an opportunity to engage children, youth, and their families in services. Further, depending on the severity of the crisis and the needs of the child or youth, crisis respite can serve as a safe alternative to inpatient hospitalization. Services that may be provided in a crisis respite setting include crisis planning for the family and child/youth, therapy, and skills training. The goal is to strengthen the ability of children, youth, and their families to prevent future crises and to better manage them if they do occur.



# 2021 System Assessment Crisis Respite



**Finding:** There are no available out-of-home, short-term crisis stabilization environments that could serve as an alternative to hospitalization for children and youth in crisis.

**Recommendation:** Medicaid managed care providers should explore the provisions of Senate Bill (SB) 1177 to add crisis respite to the community's array of crisis services.

# Residential Treatment Centers In Texas

Active/Open Residential Child Care Contracted Providers as of the End of January 2025<sup>1</sup>

Facility Type	Resource Name	Address	City	State	Start	Capacity	License Demographics		
GRO-RTC	Methodist Childrens Home Boys	1111 Herring Ave	Waco	TX	2/1/2024	21	12 - 17	Males	B M S
GRO-RTC	New Horizons Ranch Residential	294 Medical Dr	Abilene	TX	2/1/2024	68	6 - 17	Both	S I
GRO-RTC	Helping Hand Home For Children	3804 Avenue B	Austin	TX	2/1/2024	41	3 - 17	Both	M S I
GRO-RTC	Roy Maas Youth Alternatives Me	3103 West Ave	San Antonio	TX	2/1/2024	48	6 - 17	Both	M S I
GRO-RTC	Hill Country Youth Ranch Resid	Po Box 67	Ingram	TX	2/1/2024	50	5 - 17	Both	M S I
GRO-RTC	Independence Farm	2715 Liberty Dr	Corsicana	TX	2/1/2024	13	5 - 18	Both	M S
GRO-RTC	Autistic Treatment Center	15911 Nacogdoches Rd Bldg	San Antonio	TX	2/1/2024	14	3 - 17	Both	S I
GRO-RTC	New Life Childrens Treatment C	Po Box 140767	Austin	TX	2/1/2024	60	11 - 17	Females	S I
GRO-RTC	Unity Childrens Home-Boys	Po Box 672032	Houston	TX	2/1/2024	16	6 - 17	Males	M S I
GRO-RTC	L'Amor Village Rtc	16544 Kuykendahl Rd	Houston	TX	2/1/2024	42	12 - 17	Both	M S
GRO-RTC	New Hope Youth Center	Po Box 775	Richmond	TX	2/1/2024	16	11 - 17	Males	M S
GRO-RTC	Autistic Treatment Center, Inc	10503 Metric Dr	Dallas	TX	2/1/2024	31	2 - 17	Both	S I
GRO-RTC	Everyday Life Inc	6955 Broach Rd	Bryan	TX	2/1/2024	44	8 - 17	Males	M S I
GRO-RTC	Shamar Hope Haven Residential	2719 Truxillo St	Houston	TX	2/1/2024	13	10 - 17	Males	M S I
GRO-RTC	Center For Success And Indepen	3722 Pinemont Dr	Houston	TX	2/1/2024	44	12 - 17	Both	M S
GRO-RTC	Pegasus Schools, Inc.	Po Box 577	Lockhart	TX	2/1/2024	200	10 - 17	Males	M S
GRO-RTC	Depelchin Children'S Center-Ri	710 S 7th St	Richmond	TX	2/1/2024	20	5 - 17	Both	M S I
GRO-RTC	Embracing Destiny Foundation R	Po Box 2449	Spring	TX	2/1/2024	13	7 - 17	Males	M S I
GRO-RTC	Pathways Youth & Family Servic	222 Sidney Baker St S Ste	Kerrville	TX	2/1/2024	32	4 - 17	Both	M S I
GRO-RTC	Guardian Angels I Residential	9530 W Montgomery Rd	Houston	TX	2/1/2024	48	9 - 17	Females	M S I
GRO-RTC	The Burke Foundation-Pathfinde	Po Box 40	Driftwood	TX	2/1/2024	34	10 - 17	Males	B M S
GRO-RTC	A New Day Foundation	17202 Garden Creek Dr	Spring	TX	2/1/2024	13	7 - 17	Males	S I
GRO-RTC	Pathways 3h Youth Ranch	Po Box 230	Mountain Home	TX	2/1/2024				B M S I
GRO-RTC	Miracal'S Place	11960 Braes Park Dr	Houston	TX	2/1/2024	14	5 - 17	Females	M S
GRO-RTC	Unity Children'S Home - Girls	Po Box 672032	Houston	TX	2/1/2024	32	6 - 17	Females	M S I
GRO-RTC	Renewed Strength Rtc	110 Hambrick Rd	Houston	TX	2/1/2024				M S I
GRO-RTC	Kirby'S Place	5600 S Willow Dr Ste 115	Houston	TX	2/1/2024	8	7 - 15	Males	M S
GRO-RTC	Promise Rose Residential Care	9035 Comal St	Houston	TX	2/1/2024	16	8 - 17	Males	B M S I
GRO-RTC	Bluebonnet Haven, Llc	Po Box 1688	Brenham	TX	2/1/2024	64	12 - 17	Females	S I
GRO-RTC	Have Haven Inc.	5509 Wipprecht St	Houston	TX	2/1/2024	16	7 - 17	Males	M S I
GRO-RTC	Caring Heart Residential Care	9343 Mineral Rock Ln	Richmond	TX	2/1/2024	15	5 - 17	Males	B M S
GRO-RTC	Safe Haven Youth Ranch	28158 State Highway 6	Hempstead	TX	2/1/2024	32	10 - 17	Males	S I
GRO-RTC	Legacy Youth	20011 Juniper Chase Trl	Richmond	TX	2/1/2024	16	7 - 17	Females	B M S I
GRO-RTC	New Pathways Rtc, Llc	1380 Jimmy Phillips Blvd	Angleton	TX	2/1/2024	24	7 - 17	Males	S I
GRO-RTC	Open Arms Open Hearts	252 County Road 4111	Dayton	TX	2/1/2024	14	8 - 16	Males	M S
GRO-RTC	The Hemple Shelter	1318 Hemple Dr	Rosenberg	TX	2/1/2024	13	7 - 17	Males	S
GRO-RTC	La Maison, Llc	141 Shalom Ln	Anna	TX	2/1/2024	14	6 - 13	Males	S I
GRO-RTC	Abundance Of Joy Home Shelter	16335 Bunker Ridge Rd	Houston	TX	2/1/2024	11	5 - 13	Females	S
GRO-RTC	Unique Avenue	10510 Rockaway Dr	Houston	TX	2/1/2024	10	6 - 17	Females	M S
GRO-RTC	Pinecrest Emergency Care Servi	7400 N Wayside Dr	Houston	TX	2/1/2024	16	8 - 17	Males	E3
GRO-RTC	Seeds Of Royalty	1910 Teakwood St	Richmond	TX	2/1/2024	9	12 - 17	Females	S I
GRO-RTC	Creighton Oaks Residential Tre	11313 Long Drive	Conroe	TX	2/1/2024	71	8 - 17	Both	S I
GRO-RTC	Kinship Konection, Llc	Po Box 680003	Houston	TX	2/1/2024	14	9 - 17	Males	B M S

## Residential Treatment Centers In Texas (cont.)

GRO-RTC	North Star Residential Treatme	634 County Road 698	Farmersville	TX	2/1/2024	24	6 - 17	Both	B M S
GRO-RTC	Wholeness Haven Inc.	13207 Fm 2432 Rd	Willis	TX	2/1/2024	20	7 - 17	Females	M S
GRO-RTC	The Ambience Residential Treat	15222 Marlowe Grove Dr	Sugar Land	TX	2/1/2024	12	6 - 16	Males	S
GRO-RTC	Westlake House Llc	Po Box 1137	West Columbia	TX	2/1/2024	7	8 - 17	Males	S
GRO-RTC	Clear Vision Youth Center, Llc	10322 Low Bridge Ln	Sugar Land	TX	2/1/2024	10	5 - 17	Females	S
GRO-RTC	Angelic House Of Hope	5004 Laura Koppe Rd	Houston	TX	2/1/2024	11	5 - 17	Females	M S
GRO-RTC	Trels Home For Children	33210 Magnolia Cir	Magnolia	TX	2/1/2024	10	10 - 17	Females	B M S I
GRO-RTC	Hendrix Country Home	518 Anton Stade Rd	Rosenberg	TX	3/1/2024	10	13 - 17	Females	S
GRO-RTC	Kid Net Foundation _ Ms	4212 E Grand Ave	Dallas	TX	2/1/2024				B M S
GRO-RTC	Right At Home Care Inc.	5422 James Michael Drive	Rosharon	TX	3/15/2024	11	6 - 17	Females	S
GRO-RTC	Perimeter (K Shields Only)	2520 Northwinds Pkwy Ste	Alpharetta	GA	#####				B M S I
GRO-RTC/IPTP	Hill Country Youth (Iptp Only)	Po Box 67	Ingram	TX	2/1/2024				P
GRO-RTC/IPTP	New Life (Iptp Only)	Po Box 140767	Austin	TX	2/1/2024				P

<sup>1</sup>Does not include child specific or SSCC contracts.

Data Source: DFPS Data Warehouse

Data As Of: 2/7/2025

Report Number: pcs\_06slx

Report Run Date: 2/11/2025

## Residential Treatment Center Examples

- **Gulf Coast Treatment Center | Fort Walton Beach, Florida**  
<https://gulfcoasttc.com/>
- **Refuge - New Life Refuge Ministries | Corpus Christi, Texas -**  
<https://newliferefugeministries.org/refuge/>
- **The Reagan - Unbound Now | Waco, Texas -** <https://unboundnow.org/the-reagan/>
- **Lava Heights Academy | Toquerville, Utah-** <https://lavaheightsacademy.com/>
- **Falcon Ridge | Virgin, Utah -** <https://falconridgeranch.com/>
- **Victoria County Residential Center | Victoria, Texas -**  
<https://www.vctx.org/page/juvenile.detention.center>

## Youth Crisis Respite Centers

- There were only two before the 88<sup>th</sup> Texas Legislative Session and then during the 88<sup>th</sup> they added four more.
- There are currently 6 Youth Crisis Respite Centers in Texas
- All 6 are in partnership with the Local Mental Health Authority



## Youth Crisis Respite Centers

1. Heart of Texas Behavioral Health Network ([Waco](#))
2. Hill Country MHDD Centers ([San Marcos](#))
3. Integral Care ([Austin](#))
4. Bluebonnet Trails ([Roundrock](#))
5. DePelchin Children's Center ([Houston](#))
6. BCFS Health and Human Services

# RTC Data Discussion

**Partner agencies provided brief summaries of raw data on clients that access RTC programs**

**CASA:** has had 36 out of town placements with an average cost of \$1000.00 to visit each youth [2024]

**JPD:** 2024: Total of 33 out of home placements

- County Funding: budget of \$725,000/year for placements
  - They used \$712,000 of the budget
- State Funding: \$400,000/year for placements
  - They used \$406,000
- 2025: State Funding: \$400,000
  - They used 274,000 [as of March 2025]

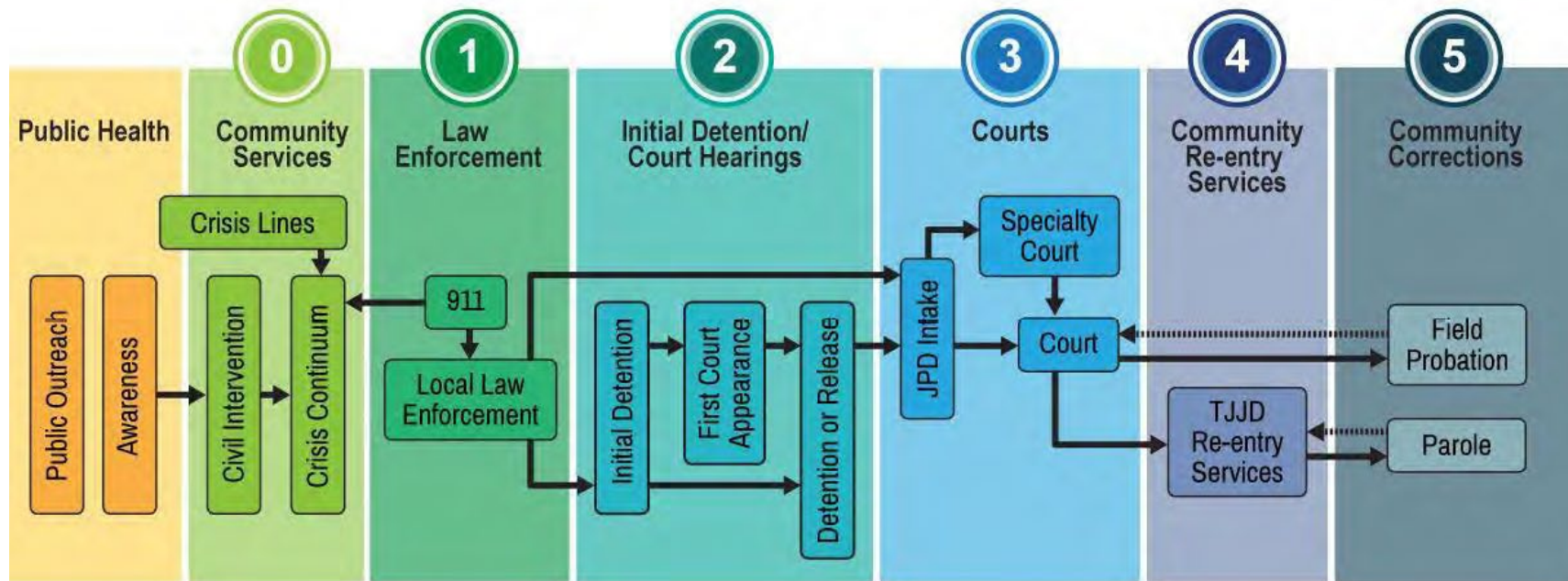
**CPS:**

- RTC Data [2023 – current]
  - Average of 19 children in RTC's at any time
  - Average Age: 14-17 yrs
  - As young as 10 yrs
  - 3% leave Texas
  - Most El Paso youth end up in Region 6

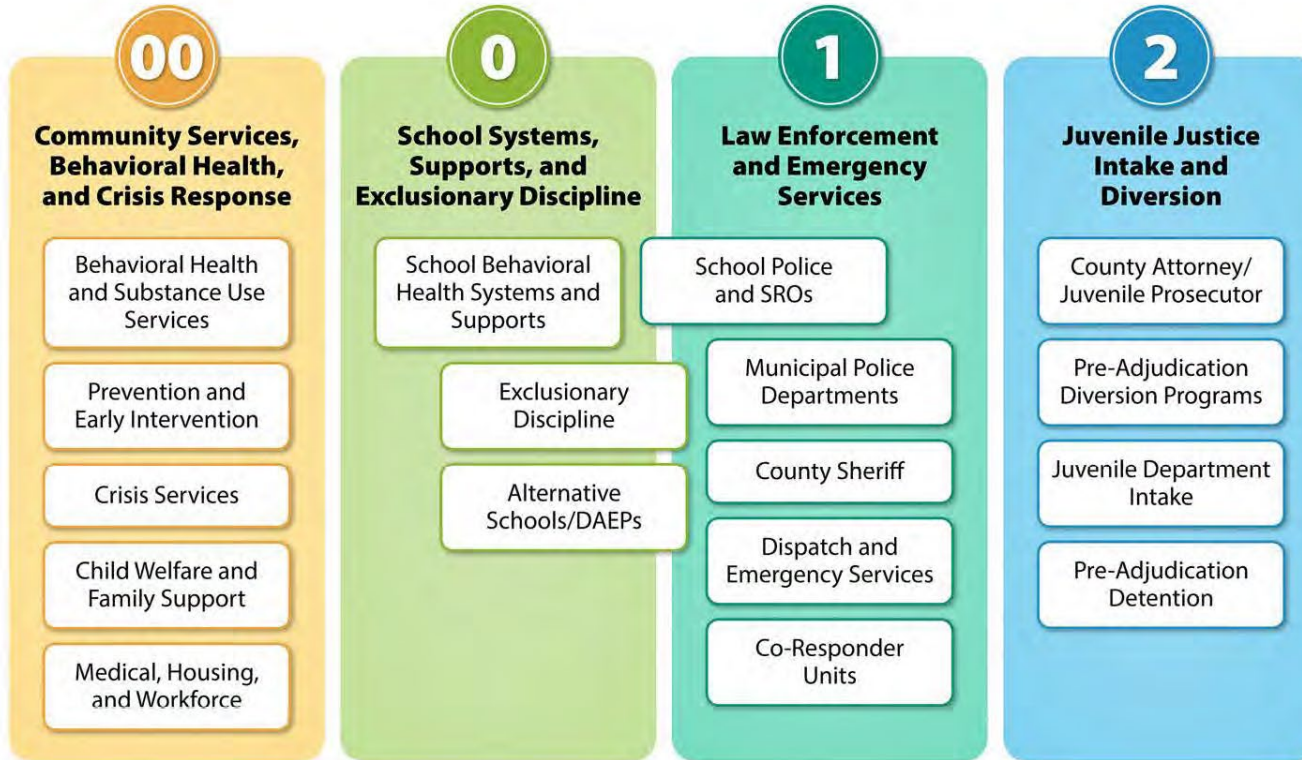
**Center of Hope:** Average of 15 youth on Runaway status

# Mapping Out Road Maps For Success

# Youth Sequential Intercept Model

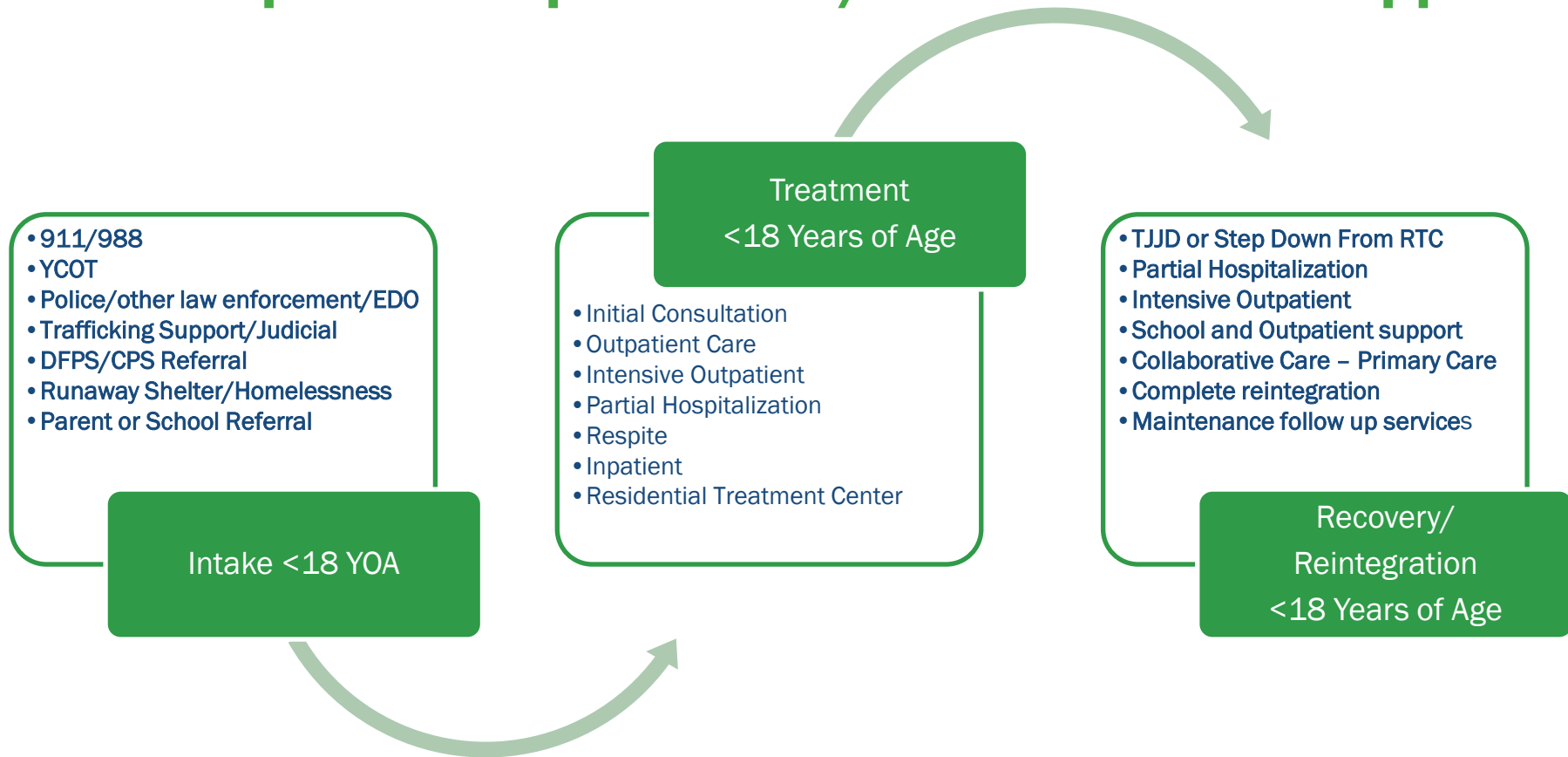


# Youth SIM Community Services





# Roadmap For Complex needs/Crisis Care and Support



# Crisis Entry Into Specialty Care System <18 YOA

911/988

YCOT

Police/  
other law  
enforcement/  
EDO

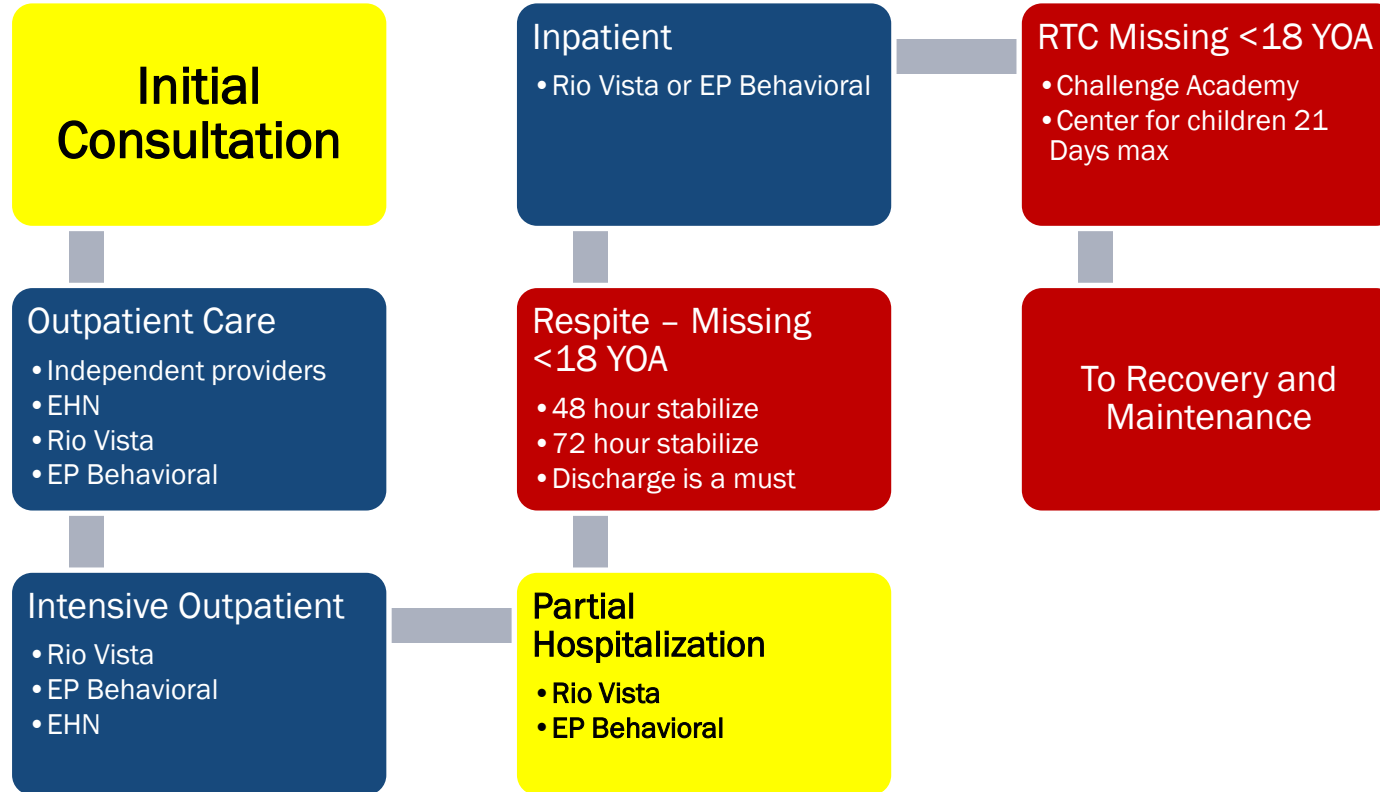
Trafficking  
Support/  
Judicial

DFPS/CPS  
Referral

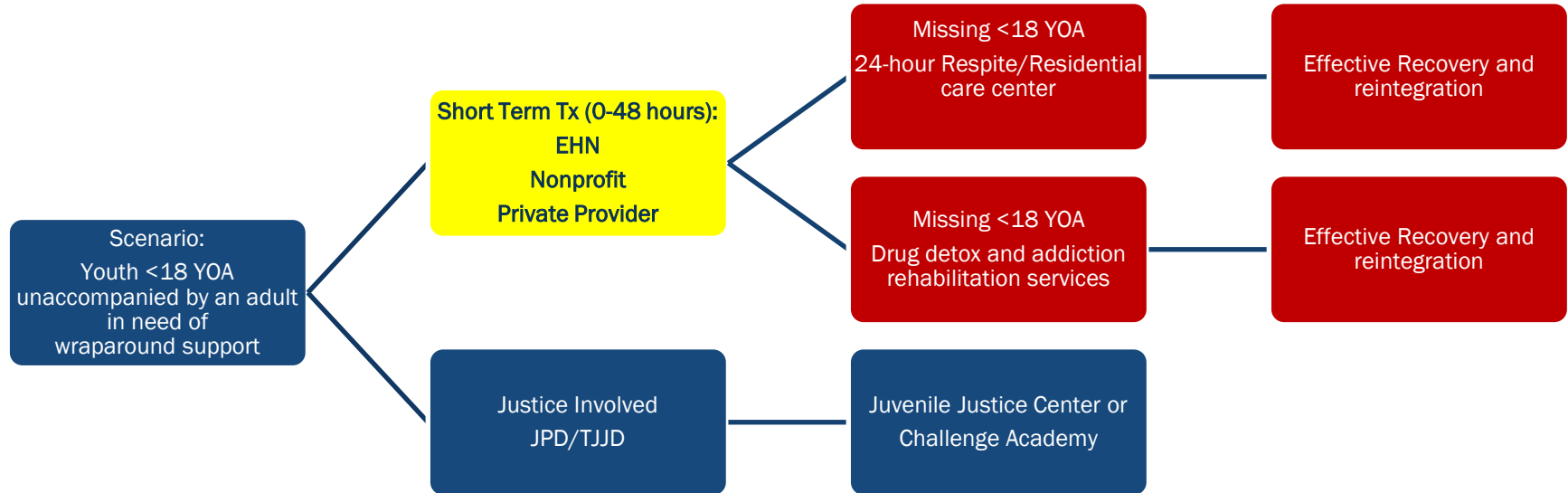
Runaway  
Shelter/  
Homelessness

Parent or  
School Referral

# Treatment Continuum Of Care Under 18 Years of Age



# Gap in Child and Youth Mental Health and Substance Use Services



# Youth SIM Behavioral Health Supports

## PUBLIC HEALTH

### Intercept 00 COMMUNITY PREVENTION & INTERVENTION, BEHAVIORAL HEALTH SERVICES

#### Youth/Family Programs

- Lee Moor Children Home
- Ciudad Nueva Community Outreach
- Community Solutions of El Paso
- El Paso Child Guidance Center
- Child Crisis Center of El Paso
- El Paso Center for Children
- NAMI El Paso
- Emergence Health Network

#### Afterschool/Mentor/Career

- UTEP's El Paso Collaborative for Academic Excellence (Opportunity Youth Initiative)
- Big Brothers/Big Sisters
- Faith-based Institutions
- Boys & Girls Club
- YMCA, YWCA and Community Centers
- Workforce Solutions
- Emergence Health Network

#### Housing

- El Paso Coalition for Homeless
- Housing Opportunity Management Enterprises (HOME)
- Multiple Shelters (full list at [epchomeless.org](http://epchomeless.org))

#### Prevention/Collaboratives

- Family Leadership Council (& Consortium)
- Paso del Norte Health Foundation : Smoke Free EP
- System of Care Grant
- CRCG Referral/Diversion- JPD referrals for youth under 11
- JPD Prevention and Intervention Program 30-45 day, 6-17-year-olds
- Youth Mental Health First Aid
- Emergence Health Network

#### Behavioral Health & EHN

- Crisis Lines (988)
- Warm Lines/Resource Lines
- MCOT (see Intercept 1)
- Intensive Services: YES Waiver, Multisystemic Therapy, Level of Care 4
- Coordinated Specialty Care for First Episode Psychosis
- Crisis Extended Observation Unit24/7
- Youth & Family Partners

#### Counseling Services

- Pinnacle Social Services
- Texas Tech University Health Sciences Center
- New Leaf Counseling
- Counseling Center of Expressive Arts
- Family Services of El Paso
- Living Hope Christian Counseling Service
- Catholic Counseling Services, Inc.
- Amistad Family Counseling Center
- Steven A Cohen Military Family Clinic Endeavors
- La Familia del Paso, Inc.

#### Case Management

- Methodist Children's Home EP Outreach
- El Paso United Family Resiliency Center
- Project Amistad
- La Mente Behavioral Health
- El Paso Child Guidance Center
- Emergence Health Network

#### Youth SUD & Peer Supports

- Aliviane Outpatient & Youth Services
- National Alliance on Mental Illness (NAMI)
- Children's Grief Center of El Paso
- Sovereign Health of Texas
- Emergence Health Network

#### Medical/BH Supports

- Project Vida
- Centro San Vicente
- Centro de Salud La Fe
- University Medical Center
- El Paso Behavioral Health
- PEAK Behavioral Hospital
- Northeast Counseling Services
- Behavior Health Support Services
- El Paso Psychiatric Center
- RVBH PRISM Program
- Emergence Health Network

#### Child Welfare/Family Crisis

- CASA
- Paso del Norte Center of Hope
- Center against Sexual and Family Violence
- Advocacy Center for the Children of El Paso
- El Paso Center for Children Runaway Center Against Family Violence Family Resource Center
- El Paso Human Services, Inc.
- Sexual Trauma and Assault Response Services (STARS)

### Intercept 0 SCHOOLS

#### School-based Supports, Systems, and Services:

YISD | SISD | EPISD

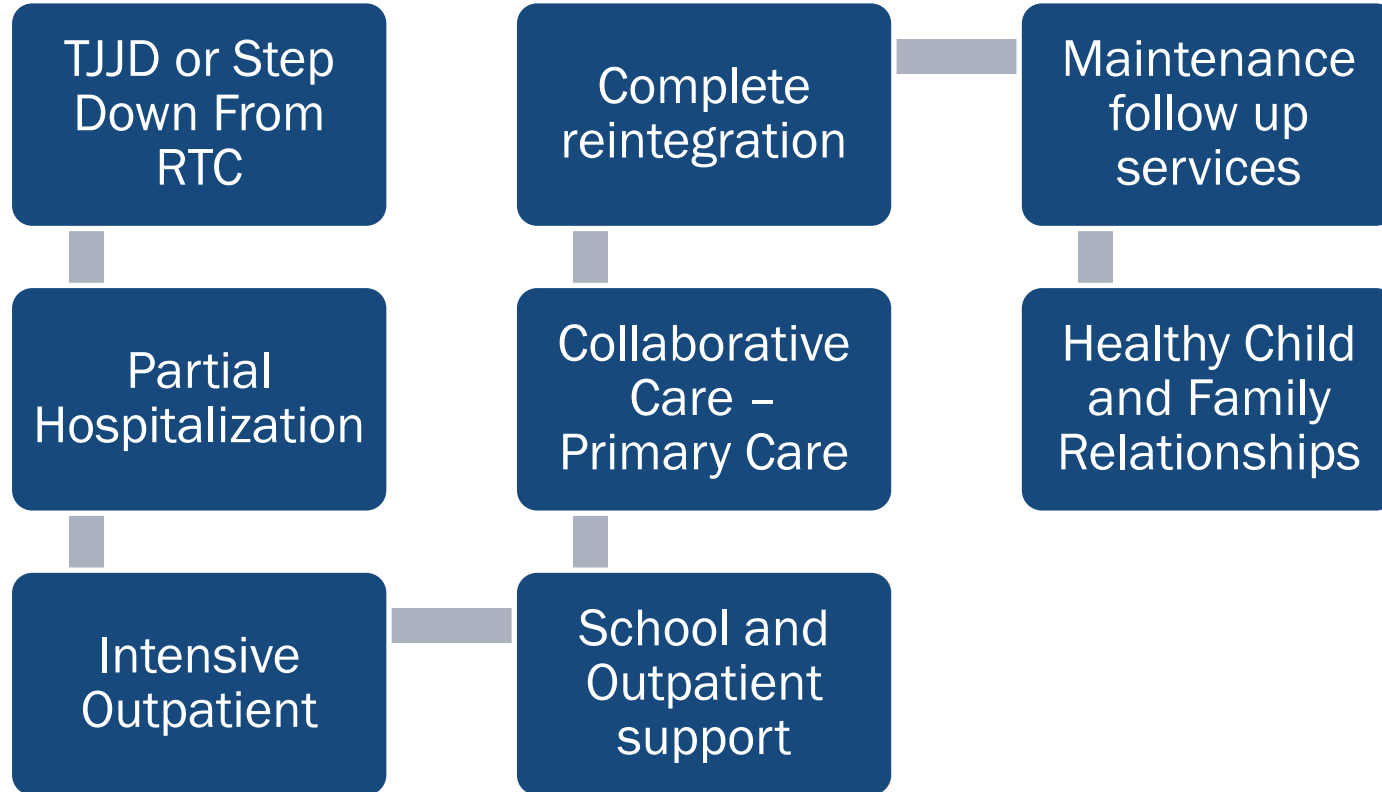
#### Exclusionary School Discipline & Alternative Schools

YISD | SISD | EPISD

## INTERCEPT 1: LAW ENFORCEMENT



# Discharge to Recovery Continuum Of Care





# Open Discussion



## Next Meeting